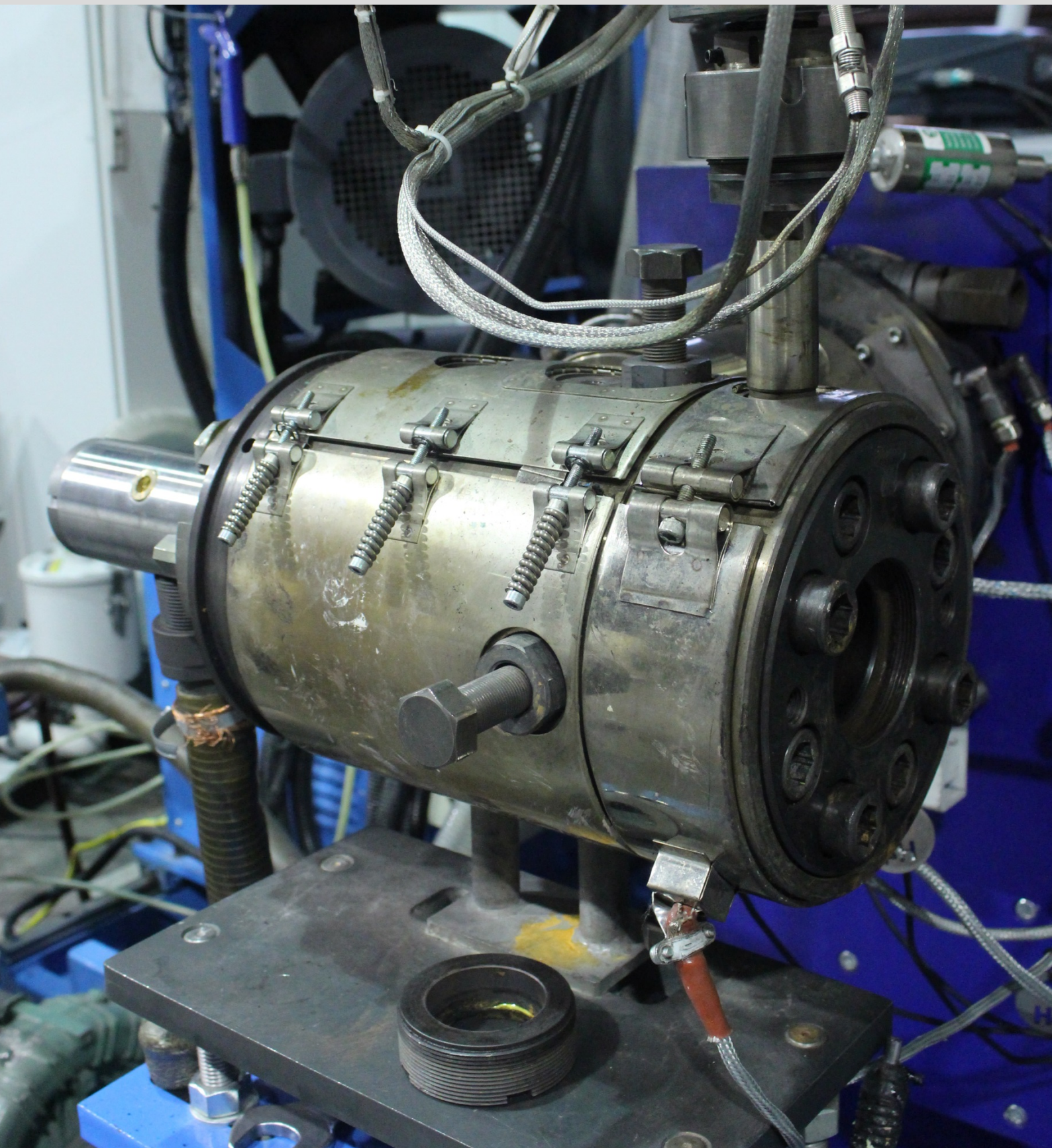


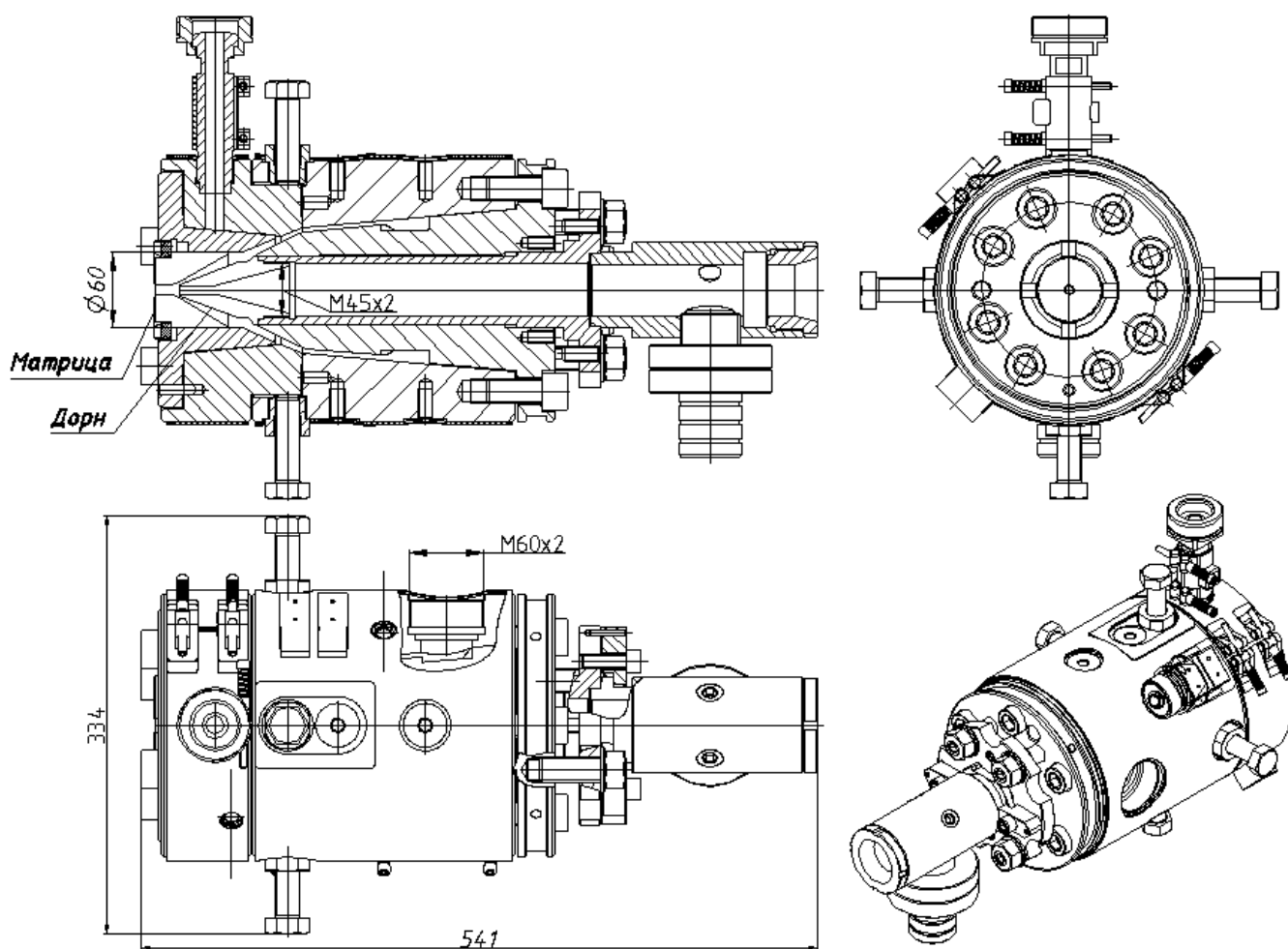
CROSSHEADS

**E40 S5M.001. // S5 KEL-150.05. // S5 KEL-120.4
S5 KEL-70/1,005**



Crossheads E40 S5M.001.

(for cable production)



A crosshead is used for extruding coatings like insulation on the electrical conductors and jacket on the bunch of insulated conductors for mechanical strength or protection from external influence.

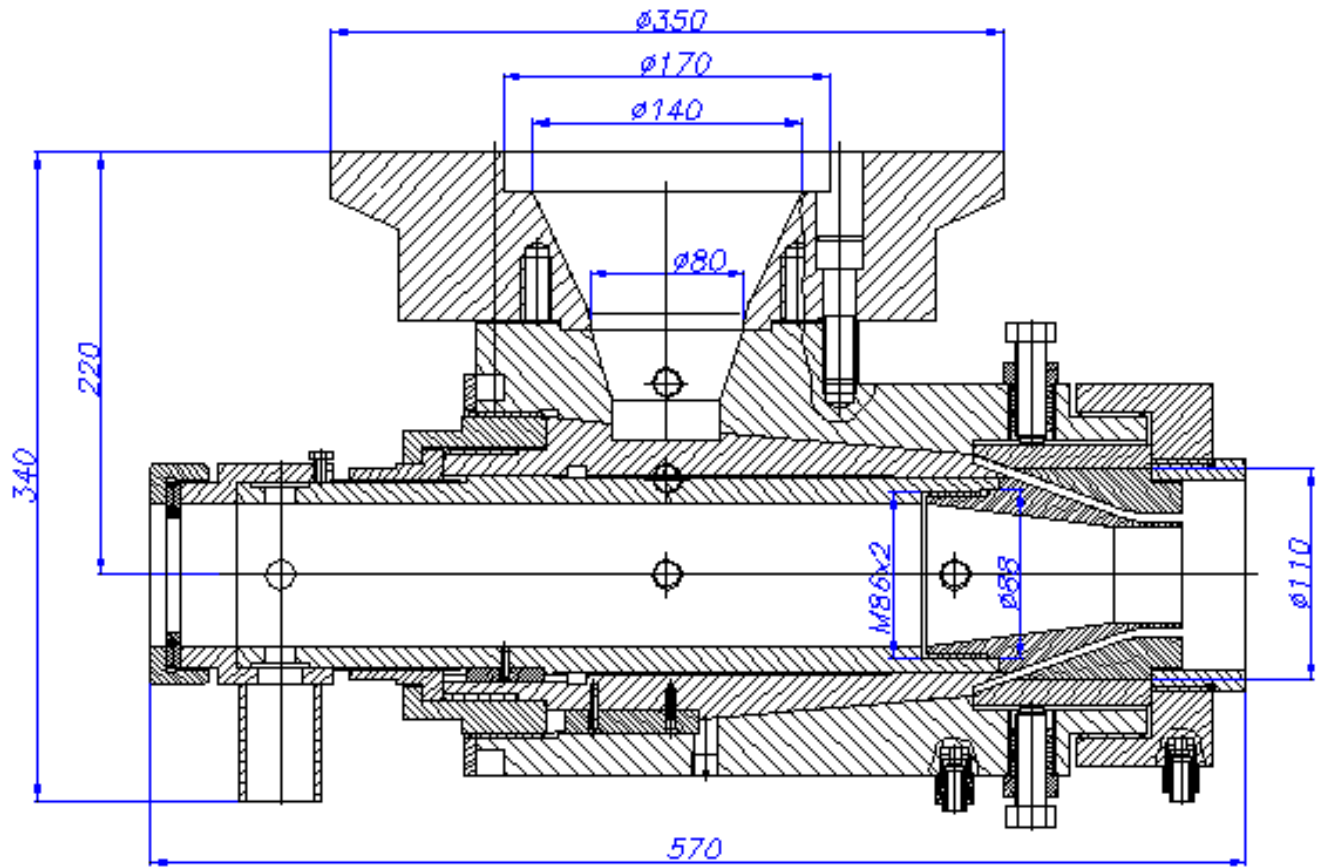
Maximum conductor diameter – 38 mm

Maximum insulation diameter – 45 mm

The active parts of crosshead are produced from 40KH13 stainless steel with the hardness of 40...45 HRC.

Imported flexible elements can be supplied with the crosshead.

Crossheads S5 KEL-150.05. (for cable production)



A crosshead is used for extruding coatings like insulation on the electrical conductors and jacket on the bunch of insulated conductors for mechanical strength or protection from external influence.

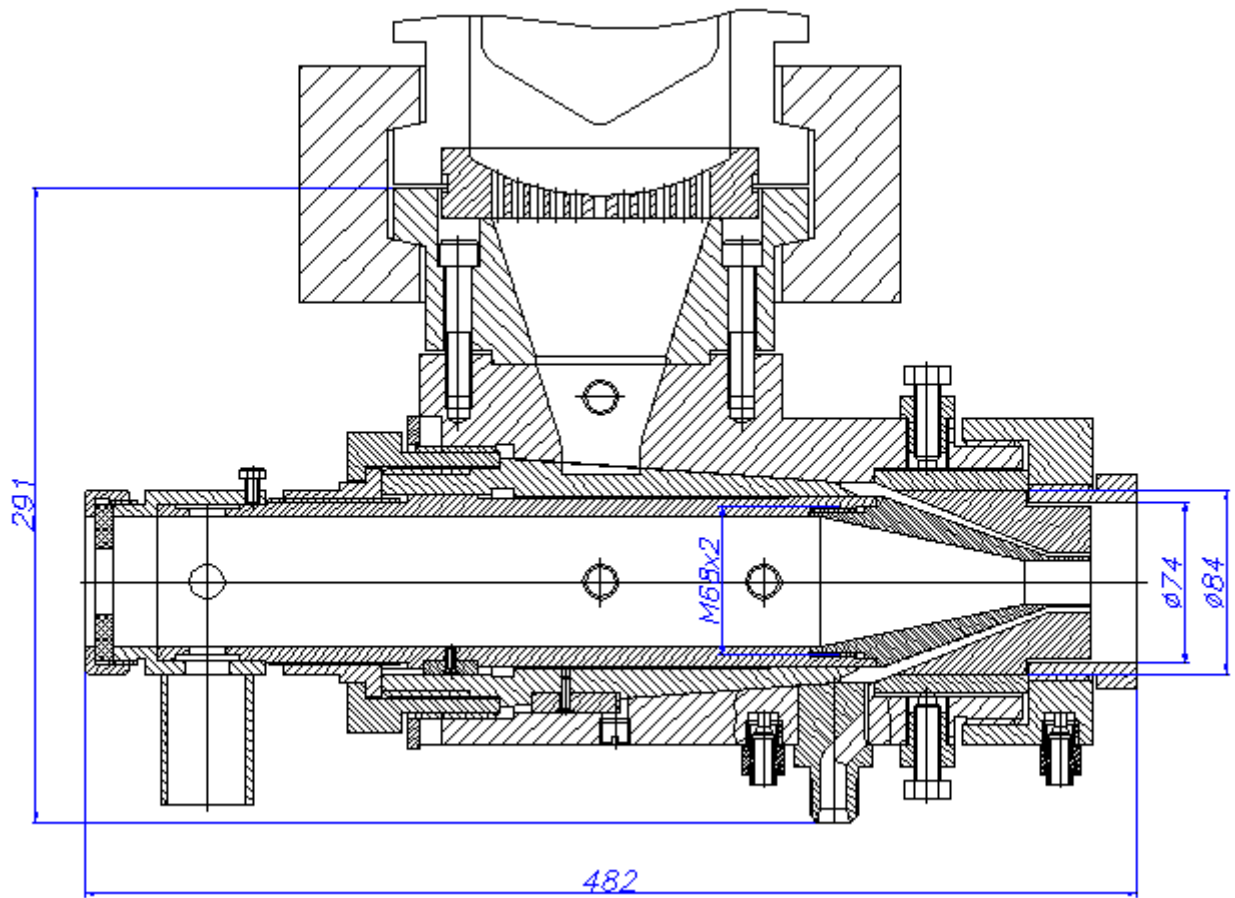
Maximum conductor diameter – 78 mm

Maximum insulation diameter – 90 mm

The active parts of crosshead are produced from 40KH13 stainless steel with the hardness of 40...45 HRC.

Imported flexible elements can be supplied with the crosshead.

Crossheads S5 KEL-120.4. (for cable production)



A crosshead is used for extruding coatings like insulation on the electrical conductors and jacket on the bunch of insulated conductors for mechanical strength or protection from external influence.

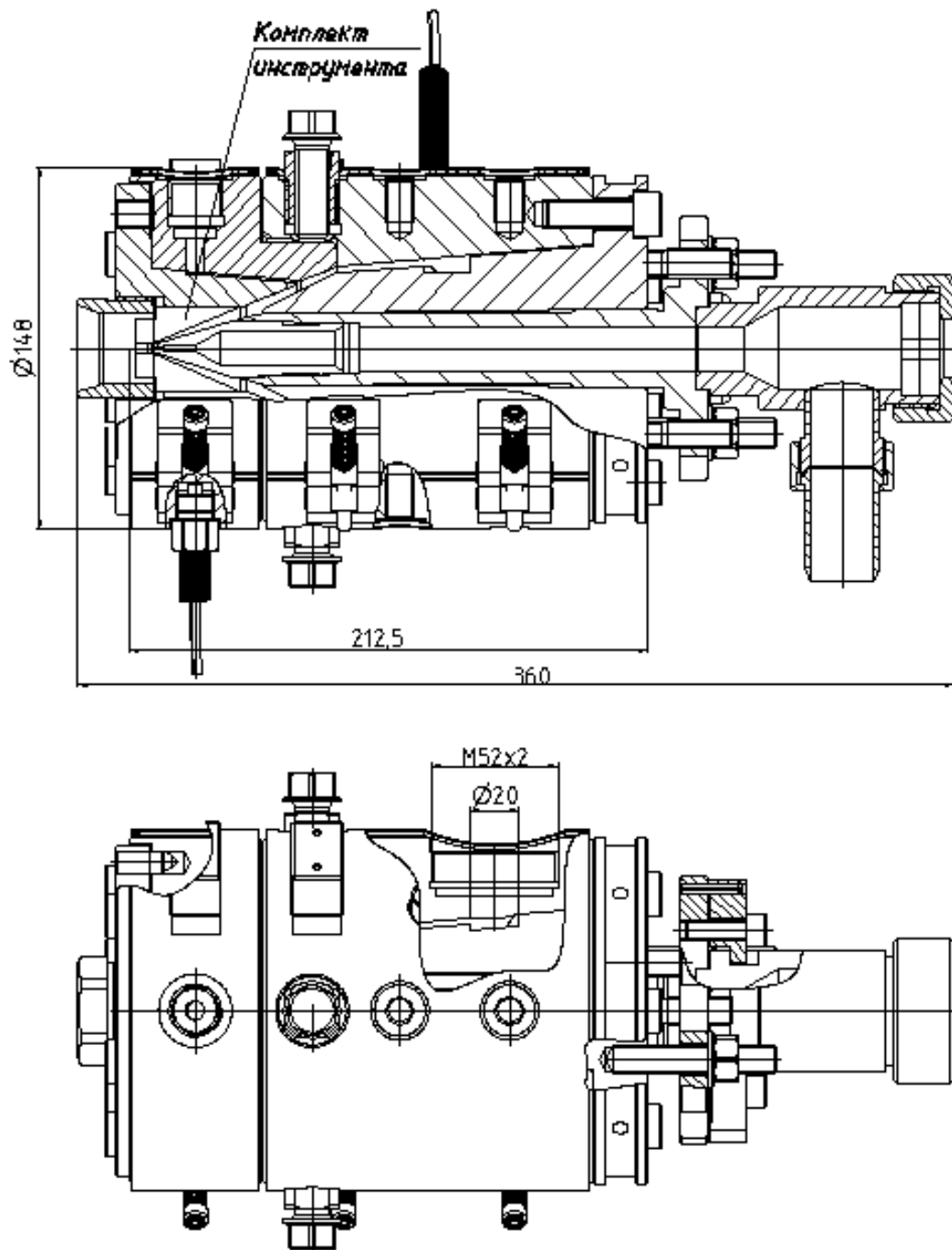
Maximum conductor diameter – 58 mm

Maximum insulation diameter – 65 mm

The active parts of crosshead are produced from 40KH13 stainless steel with the hardness of 40...45 HRC.

Imported flexible elements can be supplied with the crosshead.

Crossheads S5 KEL-70/1,005 (for cable production)



A crosshead is used for extruding coatings like insulation on the electrical conductors and jacket on the bunch of insulated conductors for mechanical strength or protection from external influence.

Maximum conductor diameter – 30 mm

Maximum insulation diameter – 40 mm

The active parts of crosshead are produced from 40KH13 stainless steel with the hardness of 40...45 HRC.

Imported flexible elements can be supplied with the crosshead.